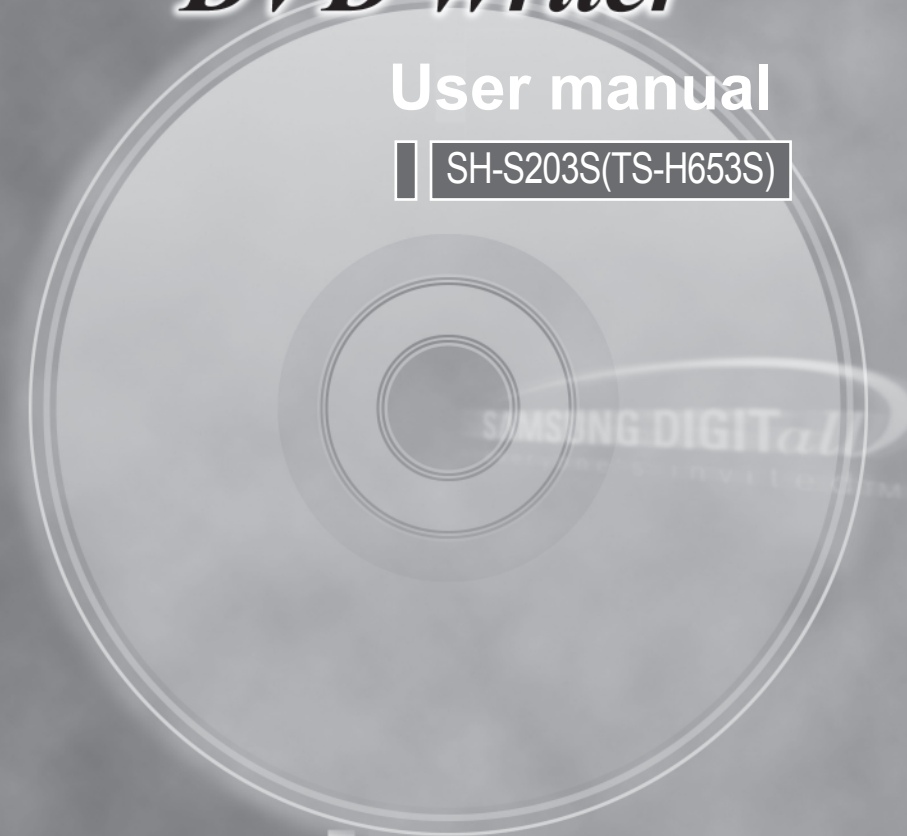


TruDirect™
DVD Writer

User manual

SH-S203S(TS-H653S)



SAMSUNG DIGIT^{all}
everyone's invited™

| | |
|------------|---------|
| English | 1~28 |
| Deutsch | 29~56 |
| Français | 57~84 |
| Italiano | 85~112 |
| Português | 113~140 |
| Español | 141~168 |
| Svenska | 169~196 |
| Русский | 197~224 |
| Polski | 225~252 |
| Suomi | 253~280 |
| Magyar | 281~308 |
| Norsk | 309~336 |
| Dansk | 337~364 |
| Türkçe | 365~392 |
| Nederlands | 393~420 |
| العربية | 421~448 |
| 简体中文 | 449~476 |



Super-Writemaster SH-S203S(TS-H653S)

User Manual - ENGLISH

FCC Compliance

This equipment has been tested and found to comply with the limits for a Class B digital device, pursuant to Part 15 of the FCC rules.

These limits are designed to provide reasonable protection against harmful interference in a residential installation.

This equipment generates, uses, and can radiate radio frequency energy and, if not installed and used in accordance with the instructions, may cause harmful interference to radio communications. However, there is no guarantee that interference will not occur in a particular installation. If this equipment does cause harmful interference to radio or television reception, which can be determined by turning the equipment off and on, the user is encouraged to try to correct the interference by one or more of the following measures:

- Re-orient or relocate the receiving antenna.
- Increase the separation between the equipment and receiver.
- Connect the equipment into an outlet on a circuit different from that to which the receiver is connected.
- Consult the dealer or an experienced radio/TV technician for help.

CAUTION

Change or modifications not expressly approved by the manufacturer responsible for compliance could void the user's authority to operate the equipment.

LASER STANDARD

IEC 60825-1 :1993 +A1 :1997 +A2 :2001

WEEE

Correct Disposal of This Product (Waste Electrical & Electronic Equipment)

(Applicable in the European Union and other European countries with separate collection systems)



This marking shown on the product or its literature, indicates that it should not be disposed with other household wastes at the end of its working life. To prevent possible harm to the environment or human health from uncontrolled waste disposal, please separate this from other types of wastes and recycle it responsibly to promote the sustainable reuse of material resources.

Household users should contact either the retailer where they purchased this product, or their local government office, for details of where and how they can take this item for environmentally safe recycling.

Business users should contact their supplier and check the terms and conditions of the purchase contract. This product should not be mixed with other commercial wastes for disposal.



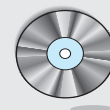
• Samsung Eco-mark

The Samsung's own Eco mark helps consumers to easily understand that Samsung develops eco-friendly products. This mark represents Samsung's continuous effort to develop eco-friendly products.

• RoHS

(Restriction of the use of certain hazardous substances in electrical and electronic equipment)
The RoHS, the environment regulation announced by European Union, restricts the use of lead, mercury, cadmium, hexavalent chromium, PBB, and PBDE in products put on the market in The European Union after July 1, 2006.

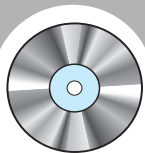
- <http://www.samsung-ODD.com>
- <http://www.samsung.com>



Contents

1. User manual

| | |
|--|----|
| Safety Precautions | 3 |
| Introduction | 5 |
| Installation method | 6 |
| Connection method | 7 |
| How to connect a device for the use of TruDirect program | 8 |
| How to operate/Disc care and keeping method | 9 |
| Easy checks | 10 |
| Technical specifications | 11 |
| Before the installation of TruDirect | 12 |
| 1. Installing the TruDirect | 14 |
| 2. Starting the TruDirect | 16 |
| 3. Using the Express mode of TruDirect | 18 |
| 4. Using the manual mode of TruDirect | 22 |
| 5. Easy checks for TruDirect | 27 |



Safety Precautions

※ These contents are for the safety of a user and prevention of property damage.
Read the following contents carefully and use a product correctly.

Warning/Caution



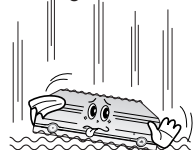
Warning : This is indicated when there is a possibility of death or fatal injury.

Caution : This is indicated when there is a possibility of property damage.

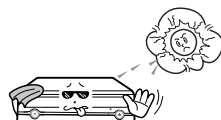
● When you install the drive

Place the drive on a level surface.

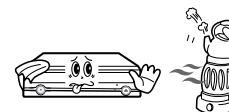
- Failure to do so may cause the device to fall onto a hard surface, resulting in damage or malfunction.



- Do not place the drive in direct sunlight.



- Avoid low- or high-temperature environments.

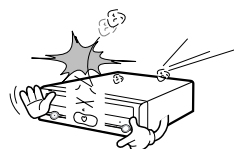


- Avoid high-humidity environments.



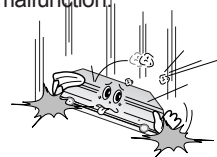
● While operating

Handle with caution to prevent damage from external shock.



Do not drop the drive, and protect it from severe shocks.

- It can damage the drive or cause it to malfunction.



Do not move the drive while in operation and do not attempt to open the disc tray by force. Make sure to close all working programs before attempting to open the tray and always use the open/close button.



Do not insert a pin into the emergency opening while in operation.



Do not use cracked, distorted or damaged discs.



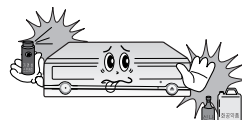
In particular, a disc with a crack on the inner tracks may break while in use.

● Other

- Never allow food particles or foreign substances to enter the drive casing.



- To protect against the risk of fire, do not spill such liquids as alcohol and benzene on the drive.



Do not disassemble, attempt to repair or modify the device without express approval as directed in the manual.

- To reduce the risk of damage, electric shock, and fire.



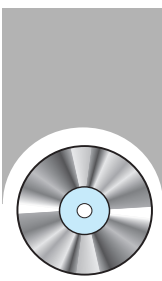
※ Any change or modification not expressly approved by designated qualified personnel could void your authority to operate this device.



Important to read and understand at all times

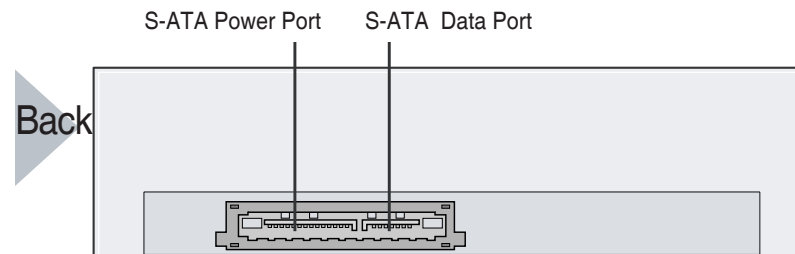
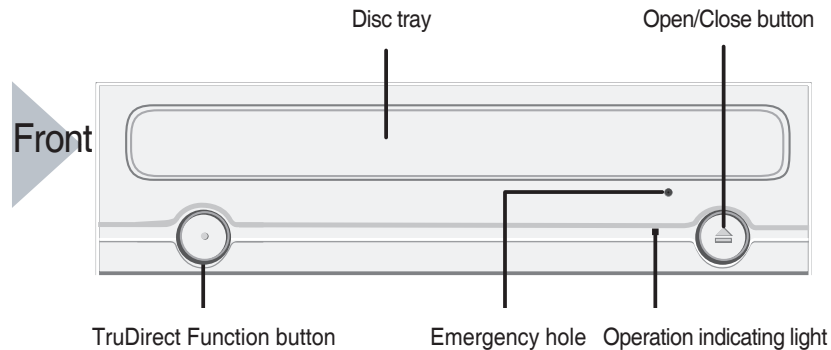


Do not disassemble



Introduction

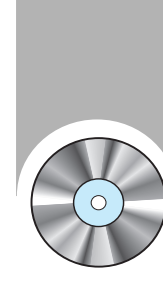
- × This product design can be changed according to the feature of product.
- × Because Record/ Play software CD is impossible to provide additionally when it is lost or damaged, keep it carefully not to lose.



Accessories

S-ATA Data Cable 1ea,
Software CD, SCREW 4ea

- The accessory type can be different and some accessories are not provided according to the product model.
- If you want a refund, you have to return the product and its accessories all.



Installation method

System required

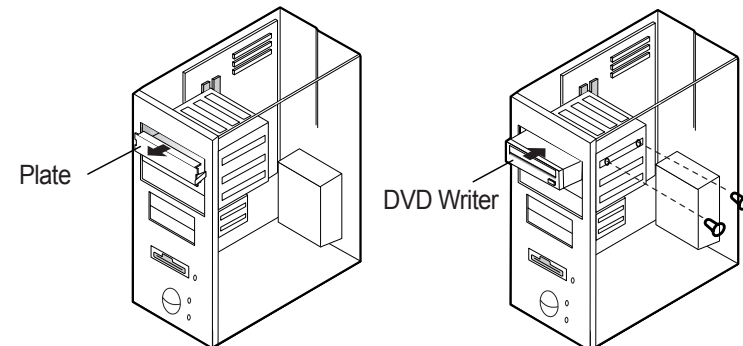
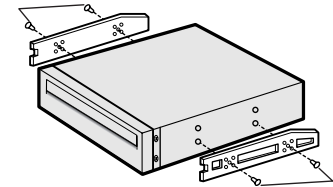
CPU : Pentium IV 2.0GHz over IBM PC or compatible PC (S-ATA support PC)
OS : Windows 2000/XP/Vista ,
RAM : 512MB over
HDD : 10GB over

The installation method of DVD Writer

This is a method to install the DVD Writer on the PC.

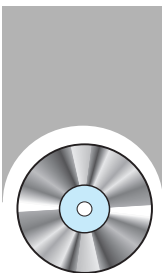
Remove a cover first, and connect a DVD Writer with a cable. And then assemble the PC again.

- 1 Turn the power of PC off and open the cover of computer.
- 2 If a horizontal support is needed, attach it to the both side of product.
 - Because a horizontal support is an accessory of computer, purchase it separately.
(Used screw : M3 x 6 x 4 EA)
- 3 Insert a DVD player to the plate as a picture.
 - If it is hard to insert it to the plate, insert it to the place of floppy disc.
 - Use a standardized goods(M3X6) we provide for a fixing screw.
 - If the other screw is used, it may cause a fault of operation.



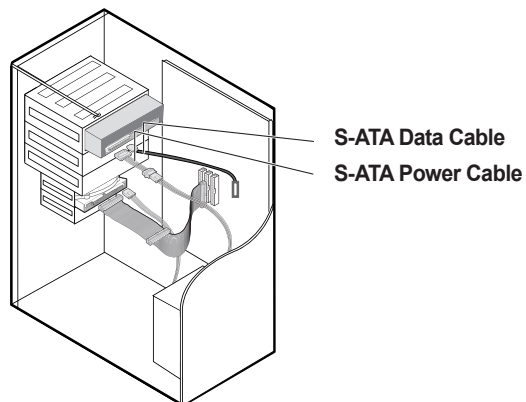
Caution: Fix it correctly with a provided fixing screw.

⚠ If it is not fixed correctly, it may be a reason of noise increase.

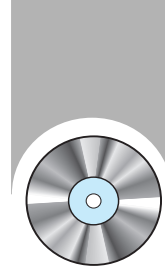
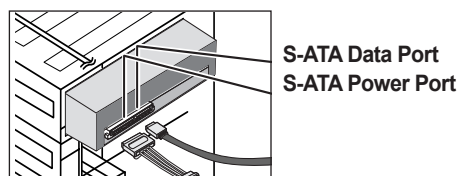


Connection method

Cable connection



- 1 The connection of S-ATA power cable
 - Connect the power cable of computer power box with the power cable of S-ATA, and connect it to the power connection port of DVD Writer placing the projection part to the left.
- 2 The connection of S-ATA Data cable
 - Put the S-ATA cable connected to the S-ATA Port of Main Board into the S-ATA Data Port of DVD Writer drive.



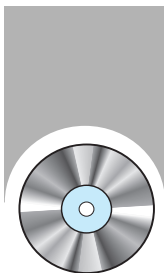
How to connect a device for the use of TruDirect program

- 1 Connect Video/Audio device to the computer before the use of TruDirect program.

Camcorder, Digital Camera, Webcam...

IEEE 1394
USB
Composite
- 2 Press the TruDirect function button at the front of product (In the high speed mode), or click the TruDirect shortcuts at the window background.
- 3 Make a DVD from the live video, photo file, and video file.
- 4 Play a DVD which is made by TruDirect with a DVD player or a PC.

➔

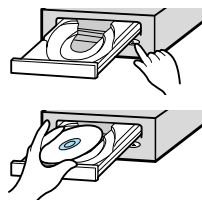


How to operate/Disc care and keeping method

The following instructions are for the user safety and the prevention of property damage.
Read instructions carefully and use a product correctly.

How to operate

- 1 Boot a computer by pressing the power button.
- 2 After booting, open the disc tray by pressing the Open/Close button.
- 3 Insert a disc(CD/DVD), and close the disc tray by pressing the Open/Close button.
 - The operation indicating light is turned on.
- 4 Play a disc(CD/DVD).



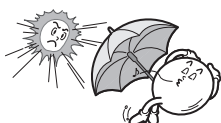
To play a DVD title/Video CD title

- Start to play after installing DVD software mpeg program which is provided with the accessories on the PC.

※ If a drive is mounted vertically, it is impossible to use 8cm of mini disc because it is not fixed.

How to store a disc

- Do not store it directly to the sun.
- Store it vertically at the even place which is well ventilated.
- Do not scribble or put a label on a disc.
- Do not impact to a disc excessively or drop it.



How to clear a disc

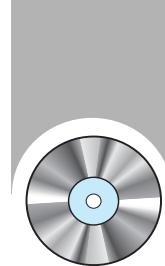
- Hold the edge of disc instead of touching the surface of disc.



- Clear a disc lightly from the center of disc to the outer side with the soft cloth.



※ If you touch the surface of disc or a foreign material or a dust is covered on the disc, it could not be operated well.



Easy checks

It cannot recognize a DVD Writer.

- Check the connection of power cable and S-ATA cable.
- Change the connection of S-ATA cable.

The speed of a PC slows after installation of DVD Writer.

A video file is not played.

- Check it after installing the newest codec program.
- Use the newest codec file to watch the movie file.
Select the codec program that supports the related compressing type and install it.

A disc is not recognized and a speed is slow.

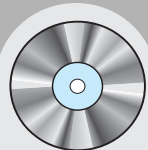
- Check a DISC condition and use it after cleaning.

A disc tray is not opened.

- Check the connection of a power cord or power cable.
- If it is not opened at the state of power on, reboot the PC and open it by pressing the Open/Close button. But still it is not opened, turn the power off and open it pushing by inserting a thin pin(clip) into the emergency hole.

A screen is cut and a speed is slow when playing a video with S/W MPEG.

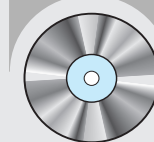
- Reduce a play screen size.
- Check the resolution of display and correct it to the proper resolution in the control panel of windows.



Technical specifications

| Category | | SH-S203S (TS-H653S) DVD Writer | | |
|--------------------------------|---------------------|--|-------------------|--|
| Disc | Usable Discs | DVD : DVD-R, DVD-RW, DVD+R, DVD+RW, DVD-ROM, DVD-Video, DVD+R(DUAL), DVD-R(DUAL), LightScribe DVD±R, DVD-RAM CD : CD-ROM, CD-R, CD-RW, CD-DA, CD+E(G), CD-MIDI, CD-TEXT, CD-ROM XA, Mixed Mode CD, CD-I, CD-I Bridge (Photo-CD, Video-CD), Multisession CD (Photo-CD, CD-Extra, Portforio), LightScribe CD-R. | | |
| | Disc Diameter | 4.72 Inch or 3.15 Inch(120mm or 80mm) | | |
| Interface Support | Interface Port | S-ATA | | |
| | Burst Transfer Rate | SATA 1.5Gbps | | |
| Access Time (Random) | CD-ROM | 110ms(Random) | | |
| | DVD-ROM | 130ms(Random) | | |
| Disc Labeling Time | Media Type | Setting | Titles only | Titles entire label area(including GRAPHICS) |
| | CD Media | Best | Less than 3:30min | Less than 28:00min |
| | DVD Media | Best | Less than 3:30min | Less than 30:00min |
| Data Transfer Speed(Max) | Media Type | Write | | Read |
| | DVD+R | CAV 20X | | CAV 16X |
| | DVD+RW | ZCLV 8X | | CAV 12X |
| | DVD+R Dual | ZCLV 16X | | CAV 12X |
| | DVD-R Dual | ZCLV 12X | | CAV 12X |
| | DVD-R | CAV 20X | | CAV 16X |
| | DVD-RW | CLV 6X | | CAV 12X |
| | DVD-ROM(single) | - | | CAV 16X |
| | DVD-ROM(Dual) | - | | CAV 12X |
| | DVD-RAM | CAV 12X | | CAV 12X |
| | CD-ROM | - | | CAV 48X |
| | CD-R | CAV 48X | | CAV 40X |
| | US-RW | ZCLV 32X | | CAV 40X |
| | HS-RW | CLV 10X | | CAV 40X |
| | CD-RW | CLV 4X | | CAV 40X |
| Buffer Memory | | 2MB | | |
| Drive Installation | | Horizontal / Vertical | | |
| Operating Environment | Temperature | 41°F ~ 122°F (5°C ~ 45°C) | | |
| | Humidity | 5 ~ 80% (RH) | | |
| Size (Width × Height × Length) | | 5.34 X 1.65 X 6.69 Inch (148.2 X 42 X 170 mm) | | |
| Weight | | 750g | | |

※ The above specification could be changed without a notice for the improvement of performance.



Before the installation of TruDirect

PC software required

- Windows 2000(Service pack 4), Windows XP(Home, Professional & Professional MCE), Windows Vista(Basic, Business, Premium, Enterprise & Ultimate).
- Microsoft DirectX 9.0 over.

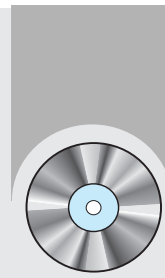
PC hardware required

- CPU : Intel P-4 2.8 GHz over (Windows 2000/XP), Intel Core2Duo 1.8GHz over (Windows Vista)
Intel P-4 2.8 GHz over for the real time recording through IEEE1394(Firewire)
- Memory : 512 MB over (Windows 2000/XP), 1 GB over (Windows Vista)
- HDD : 60 MB over space for program installation, 9GB below space in maximum for DVD production
- Video Card : Video card compatible with DirectX 9.0 (Windows Vista 128MB over)
- ODD : SAMSUNG TruDirect™ Drive (In case of external type, USB 2.0 Interface)
- AV PORT : IEEE 1394, USB 2.0 and Composite connection

PC Input Source supported

- Video/Audio
PC Interface supported : IEEE 1394, USB2.0, Composite or Video Capture Card.
Devices supported : Camcorder, TV, Set Top Box(STB), VCR, Digital Camera, Webcam
- Photo
PC Interface supported : USB 2.0
Devices supported : Digital Camera, Camcorder, Memory stick (Memory device of great capacity)
- Video/Photo file
Video/Photo File that is made by the user or downloaded from the internet.

TruDirect is a DVD Recording Program which is based on the Windows OS of Microsoft. So, it can record all of video files which are played in the PC (e.g. Windows Media Player). (The normal play of a video file in the PC means that there is a correct codec for the play of video file. Install the correct Software(CODEC) if it is impossible to play the video file.)



1. Installing the TruDirect

Media format supported

- DVD-R, -R DL, -RW, +R, +R DL, +RW and RAM media. (Including the 8cm disc)

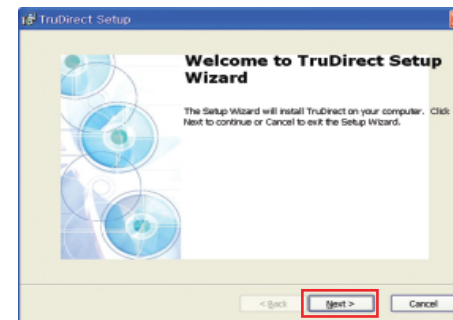
File format supported

1. DVD-Video compatible video
2. DVD-Video compatible photo DVD
3. DVD-Video compatible multimedia file
4. Data file related to the video or photo file

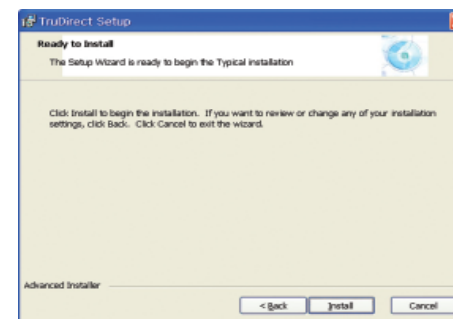
1. Select "Install TruDirect".



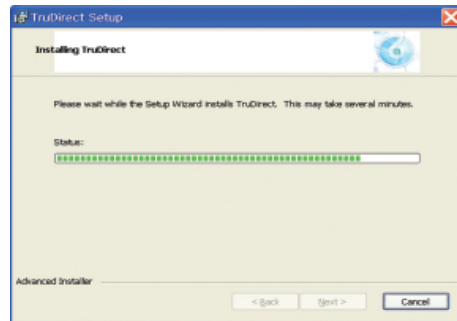
2. If the TruDirect installation wizard is appeared, press [Next] button.



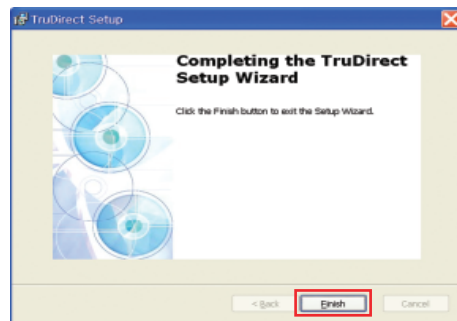
3. If the installation preparation is completed, press [Install] button.



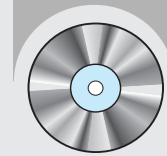
4. The installation of TruDirect is proceeding.



5. If the installation of TruDirect is completed, press [Finish] button to complete the installation.



- ※ For the installation of TruDirect application, the installation manager judges if a drive is certificated.
If it is a certificated drive, the installation manager continues the installation of TruDirect.
If not, the installation manager indicates an error message and stops the installation.



2. Starting the TruDirect

Start of TruDirect

There are three methods in the start and use of TruDirect.

- Click the TruDirect shortcuts in the windows background or start menu.
- Select Trudirect in the application list of OS search popup window.
- Press the TruDirect function button in the front of drive.

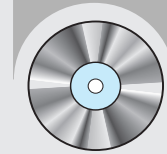
Manual mode and Express mode

A user can operate TruDirect with a manual mode or a Express mode according to the level of intervention that a user wants.

- **Express Mode** : It is possible to make a DVD in a short time by clicking many buttons of popup screen or TruDirect function button of front of drive.



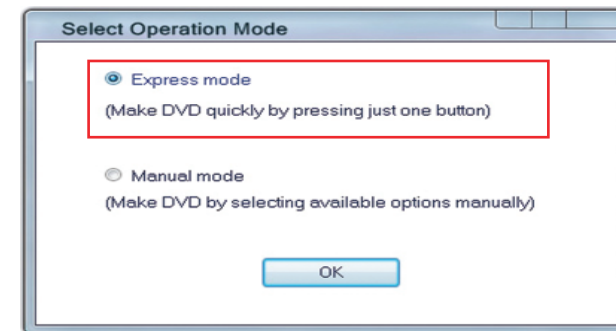
- **Manual Mode** : You can make a DVD by selecting the usable option directly.



3. Using the Express mode of TruDirect

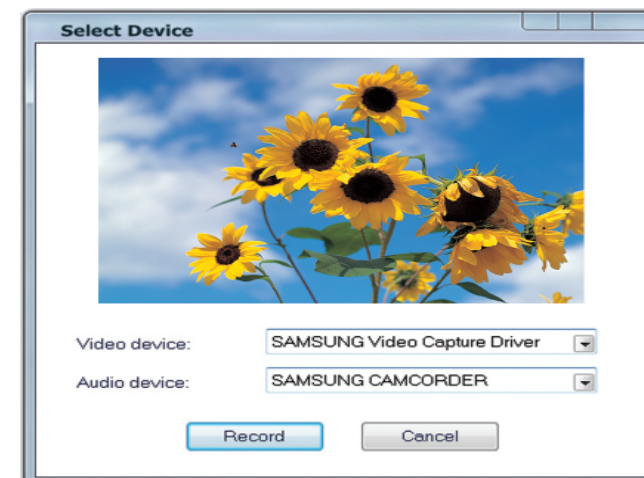
Express mode of TruDirect

Select the Express mode by clicking the TruDirect function button of the front of drive after connecting a support device with a PC. You can also select the high speed mode by clicking the Express mode button in the operation mode selection dialog box.

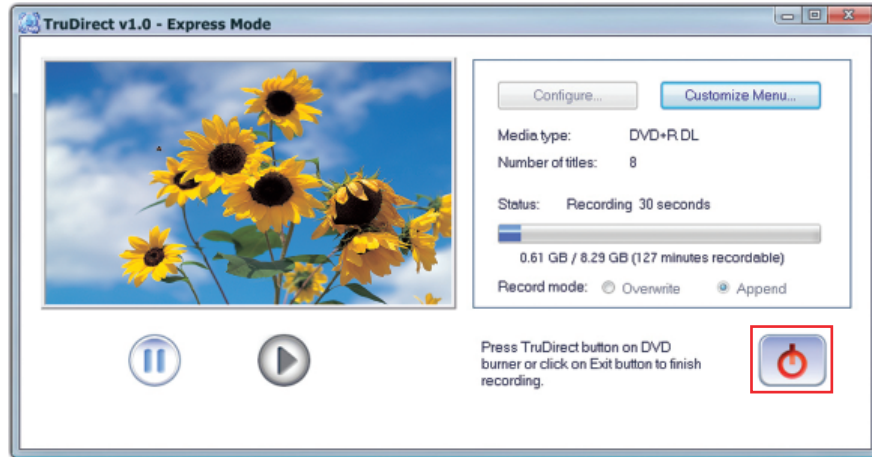


A. Making a DVD from the Live Video(Streaming image- DV camcorder, Web camera, etc.)

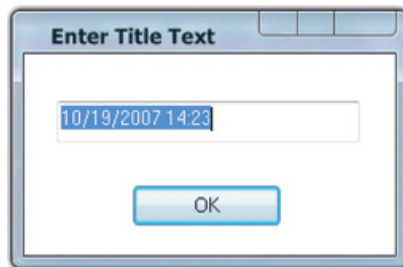
1. If a live video device is detected, the video preview is displayed in the device selection dialog box automatically.



2. If you click the recording button, the recording starts and the video is displayed in the main screen.



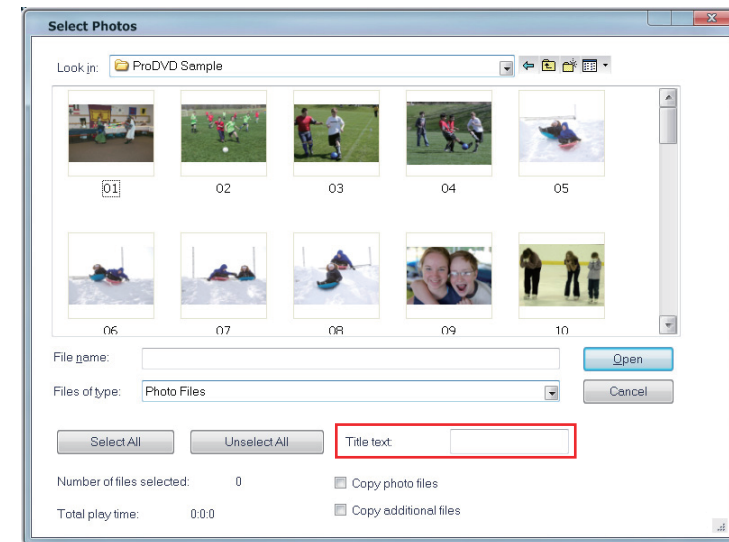
3. Clicking the recording stop displays the title input popup window.



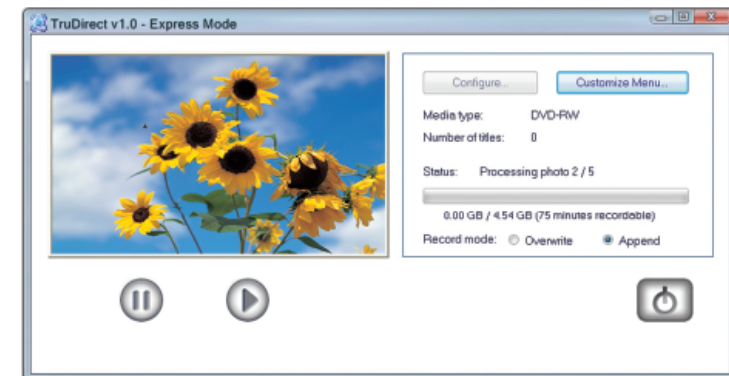
4. Stop and complete the recording by clicking the confirmation after change of text. After completion, TruDirect drive discharges a media.

B. Making a DVD from the photo file

1. If photo files of portable memory device are detected, photo thumbnail preview is executed in the photo selection dialog box.



2. Input a title after selecting the picture to record. It is possible to record when photo files are five over.
3. Click the open button to start the recording of TruDirect drive.

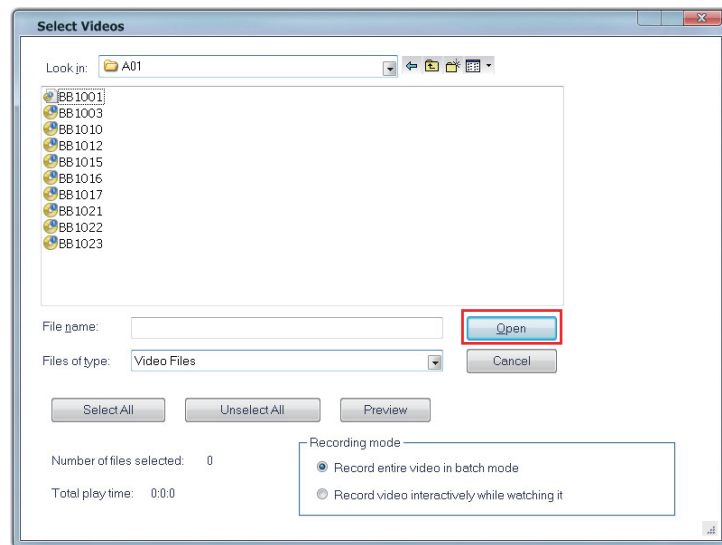


4. After completion of recording, TruDirect drive discharge a media.

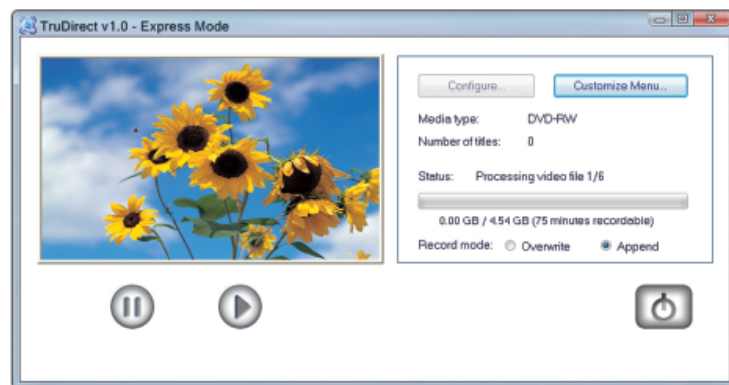
4. Using the manual mode of TruDirect

C. Making a DVD from the video file

1. If the video file of portable big size storage device like a hard drive camcorder or a digital camera is detected, the video file list is displayed at the video selection dialog box.



2. Select video files to record.
3. Click the open button to play video files automatically in the main screen and a recording starts.



4. After completion of recording, TruDirect drive discharge a media.

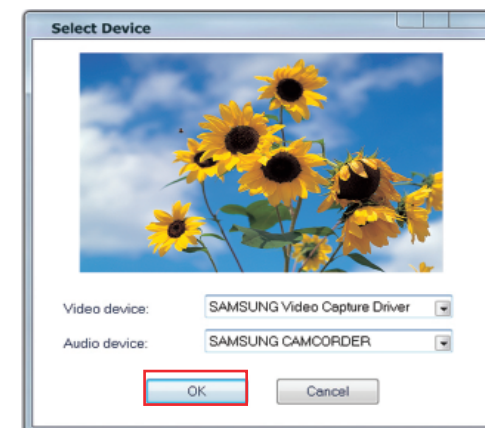
Manual mode of TruDirect

A. Making a DVD from the live video(Streaming image - DV camcorder, Web camera, etc.)

1. The main screen is displayed if TruDirect starts.



2. Connect a video device with a user's PC.
3. Click the live picture of main screen.
4. Check the video and audio device to record, and click the confirmation.



5. Click the start of recording to record a DVD.



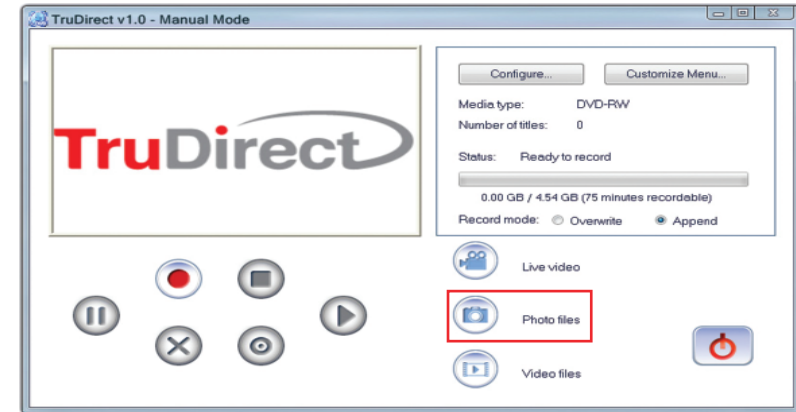
6. Clicking the recording stop displays the title input popup window.
Input a title and click the confirmation.

7. Click the recording completion button if the recording completion button is usable and the recording completion is prepared.
After completion of DVD recording, a DVD is discharged automatically.

8. Click the finish to finish the TruDirect.

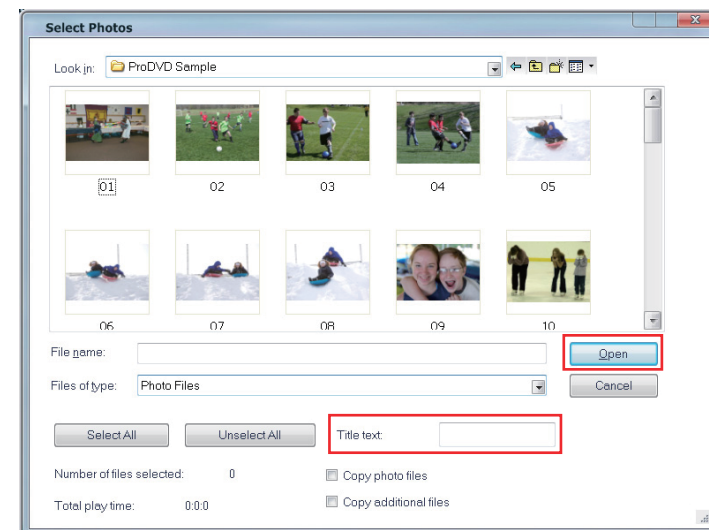
B. Making a DVD from the photo file

1. The main screen is displayed if TruDirect starts.



2. Connect a photo file source with a user's PC. Or select a photo file from the hard drive of PC.

3. Click photo files in the main screen to display the photo selection dialog box.



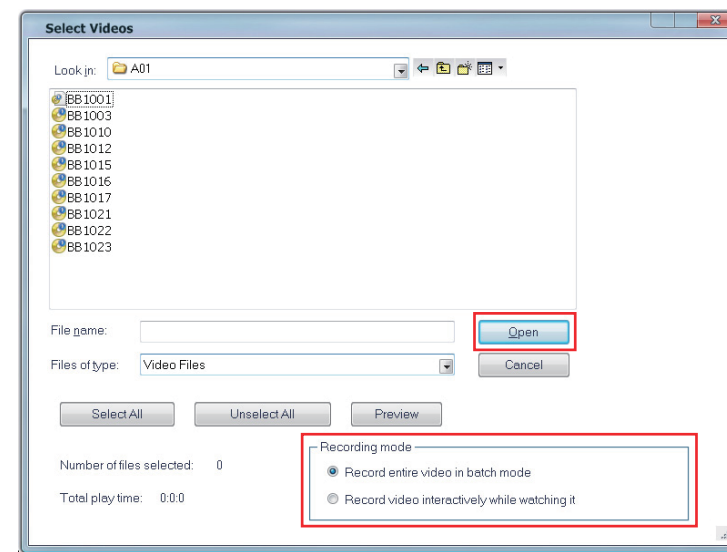
4. Select a picture to record and input the title.
5. Click the open button to start a recording.
6. Click the recording completion button if the recording is completed and a DVD discharge is prepared.
7. Click the finish to finish the TruDirect.

C. Making a DVD from the video file

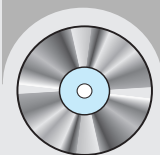
1. The main screen is displayed if TruDirect starts.



2. Connect a video file source with a user's PC to display the selection dialog box. Or select a video file from the hard drive of PC.



3. Select all video recording in the video selection dialog without watching or select a video recording interactively with watching.
4. Select video files to record.
5. Click the open button to record by DVD burner. When a video is recorded interactively in the state of watching, a video is played at the manual mode dialog box and DVD recording starts by clicking the start of recording.
6. Clicking the recording stop displays the title input popup window. Input a title and click the confirmation.
7. Click the recording completion button if the recording is completed and a DVD discharge is prepared.
8. Click the finish to finish the TruDirect.



5. Easy checks for TruDirect

1. TruDirect™ Software is not operated in the DVD Writer.

TruDirect™ Software operates by communicating with a TruDirect™ drive of Samsung.

Check if a TruDirect™ drive is connected correctly.

2. Is it possible to record a video file that a computer cannot play with TruDirect™?

It is impossible to record a video file that a computer cannot play. Confirm the normal play after installing the correct codec or decoder and then record with TruDirect™.

3. It is impossible to record with TruDirect™ in spite that a video file is played with a PC normally.

Some codec is operated in the special software. In this case, it could not be supported by TruDirect™. Recommend the use of certified and stable codec.

Also, some united codec could make the all system unstable.

4. Why a part of video files supports 'Video recording with watching' mode?

And, what kinds of video file show the present screen during the 'recording the all videos'?

In TruDirect™ 1.0, only the standard MPEG-2 video file supports 'Video recording with watching' mode. And it works quickly without showing the present screen in the case of 'recording the all videos'.

5. How to use the DV camcorder (Tape type) in TruDirect™?

To record pictures of DV camcorder, the camcorder should be connected with the IEEE 1394 (FireWire) port of PC. Execute TruDirect™ after connecting the camcorder with a PC. (If there is no IEEE 1394 port in the PC, internal/external DV capture board is needed.)

Some camcoders support the USB connection and IEEE 1394 connection at the same time.

6. How to use the USB connection of camcorder, web camera, and digital camera in?

To record video/photo files with TruDirect™ from the above devices, connect a device with a USB port of PC(1.1 or 2.0 : USB 2.0 connection provides the best data transmission rate.).

Some devices need a correct USB driver. In this case, install the provided driver with a device or the newest version of driver at the homepage of manufacturer.

*** If a device is not recognized in the Microsoft Windows OS, it is impossible to use in TruDirect™. If a device is not recognized in the OS, install the correct device driver.

7. There is no sound in DVD made with TruDirect™ by connecting the external device.

Check if the video/audio device is selected correctly at the selection window when connecting the device. Otherwise check the original source of audio is saved correctly.

8. Photo slide show is not worked normally.

There is a case that some software that DVD timer logic is not realized dose not work automatically the photo slide show made by TruDirect™. In this case, press button or click to continue to the next picture.

9. 'Write error' occurs when recording with TruDirect™.

Check if a disc is scratched, broken, or dirtied.

An error could occur if another work is processed when recording a DVD.

10. A DVD that is made with TruDirect™ is not played in my DVD player.

Check if your DVD player supports the DVD media type(±R, ±RW, ±R Dual Layer, RAM).